

Load Rating Chart

Model 30124C & 30124T

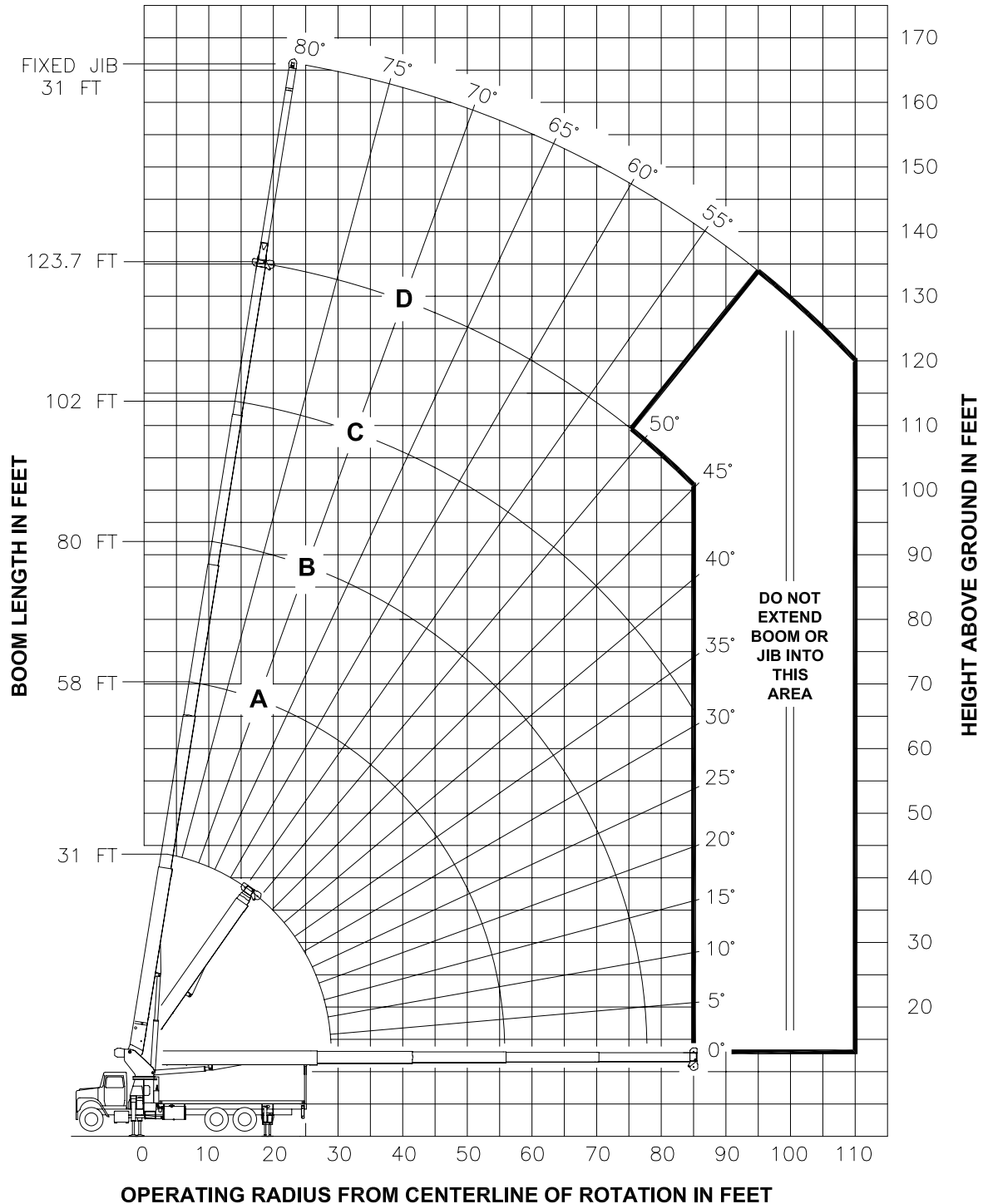


© Manitex

NOTE: Additional copies of this Load Rating Chart can be purchased from your Manitex Distributor. When ordering, use the part number shown in the bottom left corner of this page.

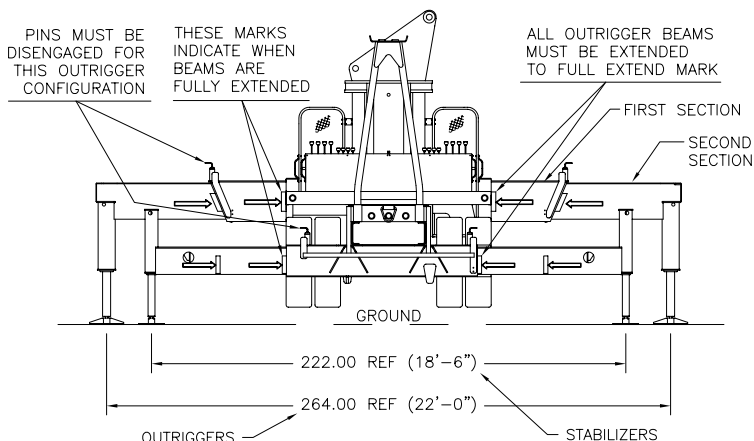


RANGE DIAGRAM - FULL SPREAD CONFIGURATION -

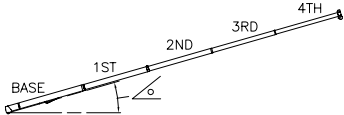


7300090-003 NR

**USE THIS CHART ONLY
WHEN OUTRIGGERS
AND STABILIZERS ARE
FULLY EXTENDED**

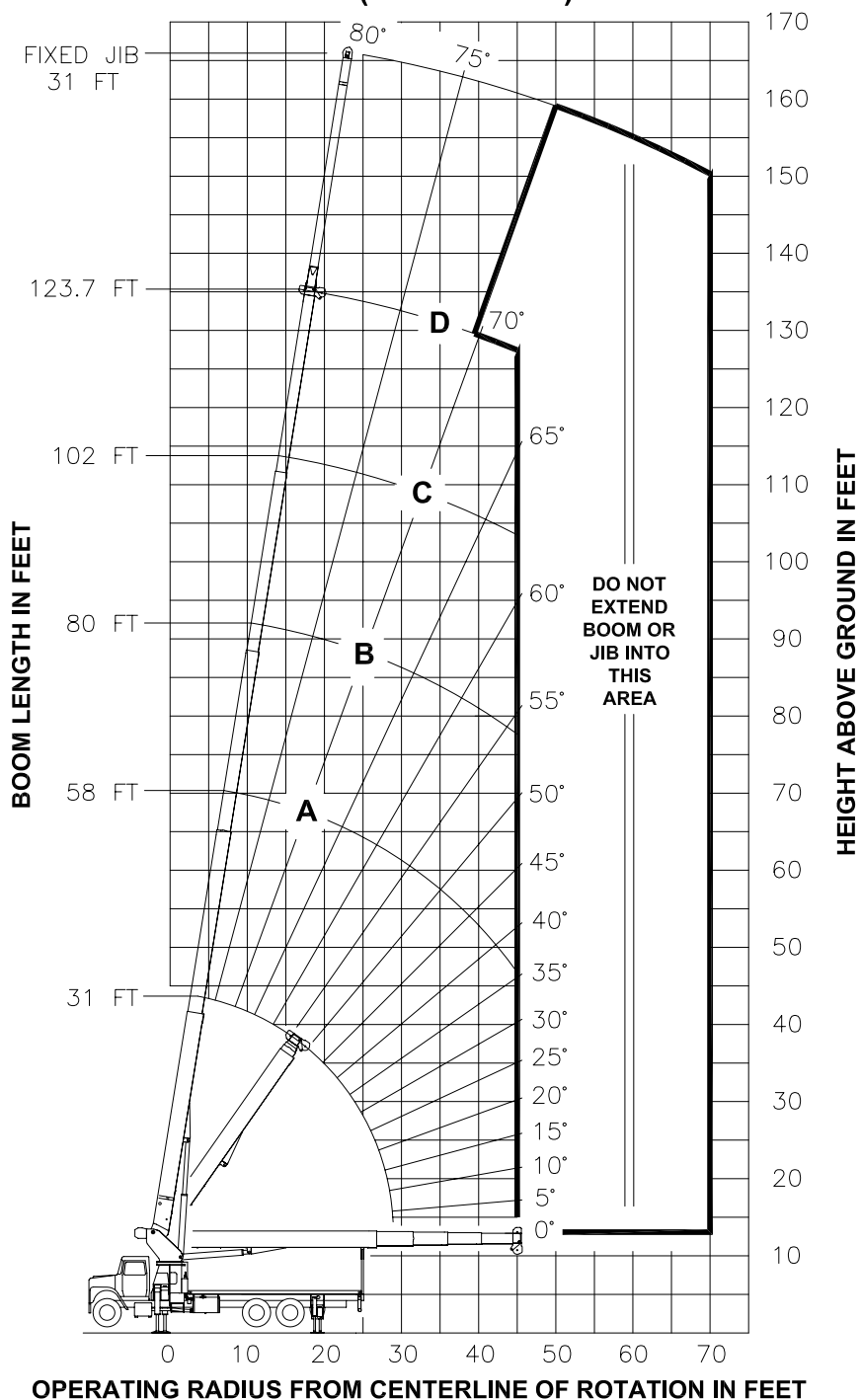


- FULLY EXTENDED OUTRIGGER CONFIGURATION -

MAIN BOOM LOAD RATINGS IN LBS											JIB LOAD RATINGS IN LBS				
LMI CODE #1											LMI CODE #2				
OPERATING RADIUS FT	LOADED BOOM ANGLE BOOM LENGTH AND MARKER												OPERATING RADIUS FT	BOOM ANG LOAD ED	31 FT JIB FOR ALL BOOM LENGTHS SEE WARNING NOTE 4
			A		B		C		D						
	°	31 FT	°	58 FT	°	80 FT	°	102 FT	°	123.7 FT					
5.5	81	60000													
8	76	46600													
10	72	39300													
12	68	34200	79	25000							10				
15	61	28620	76	25000	81	21000					12				
20	49	21500	71	19490	78	18520	81	14000			15				
25	34	16110	65	15760	74	14700	79	13000	81	8450	20				
30			60	13040	70	12070	76	11420	79	8150	25				
35			53	10430	66	10130	73	9600	76	7800	30	81	4000		
40			47	8470	62	8620	69	8120	74	7280	35	79	3850		
45			39	6560	57	6750	66	6850	72	6540	40	77	3700		
50			29	5130	52	5310	63	5410	69	5460	45	75	3550		
55			13	4020	47	4200	59	4290	66	4340	50	73	3400		
60					42	3310	56	3400	64	3450	55	71	3250		
65					36	2590	52	2680	61	2730	60	69	3080		
70					28	1990	48	2080	58	2120	65	67	2910		
75					18	1480	44	1570	55	1610	70	66	2490		
80							39	1130	52	1180	75	64	1970		
85							34	760	49	800	80	62	1530		
90											85	60	1150		
95											90	57	820		
											95	55	530		
	450 LBS		240 LBS		180 LBS		140 LBS		120 LBS		DEDUCTIONS FOR STOWED JIB				

7300090-003 NR

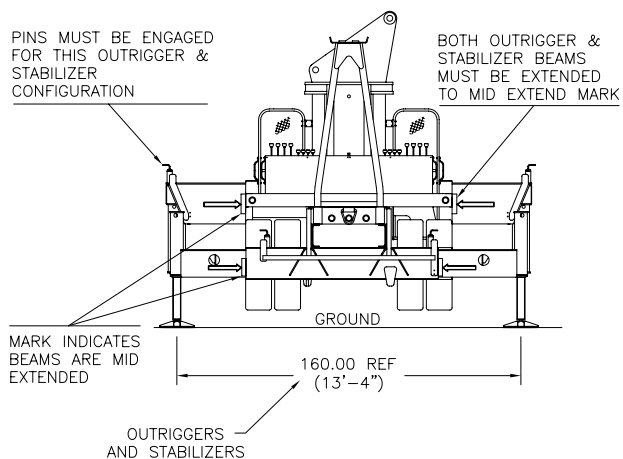
RANGE DIAGRAM - INTERMEDIATE SPREAD CONFIGURATION - (MID EXTEND)



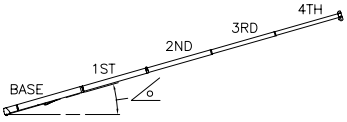
NOTE : LIFTING PERSONNEL WITH CRANE IN THIS OUTRIGGER CONFIGURATION IS STRICTLY PROHIBITED. USE ONLY FULLY EXTENDED OUTRIGGER CONFIGURATION WHEN LIFTING PERSONNEL.

7300090-003 NR


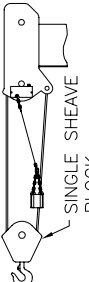


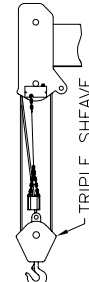
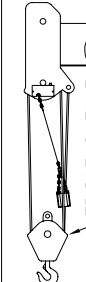
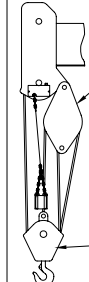
**USE THIS CHART ONLY
WHEN FRONT
OUTRIGGERS AND REAR
STABILIZERS ARE IN THE
INTERMEDIATE POSITION**



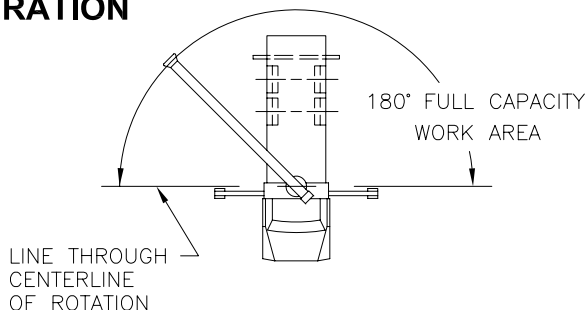
- INTERMEDIATE SPREAD CONFIGURATION - (MID EXTEND)

MAIN BOOM LOAD RATINGS IN LBS										JIB LOAD RATINGS IN LBS			
LMI CODE #9										LMI CODE #10			
OPERATING RADIUS FT	LOADED BOOM ANGLE BOOM LENGTH AND MARKER										OPERATING RADIUS FT	BOOM ANGLE	31 FT JIB FOR ALL BOOM LENGTHS SEE WARNING NOTE 4
			A		B		C		D				
	°	31 FT	°	58 FT	°	80 FT	°	102 FT	°	123.7 FT			
5.5	81	60000											
8	76	46600											
10	72	39300											
12	68	34200	79	25000									
15	61	22520	76	23390	81	21000							
20	49	12070	71	12800	78	13020	81	13140					
25	34	7300	65	7990	74	8180	79	8290	81	8350			
30			60	5230	70	5420	76	5510	79	5570	30	81	4000
35			53	3450	66	3630	73	3720	76	3770	35	79	3850
40			47	2200	62	2380	69	2460	74	2510	40	77	2820
45			39	1280	57	1450	66	1530	72	1580	45	75	1890
50											50	73	1170
450 LBS			240 LBS		180 LBS		140 LBS		120 LBS		DEDUCTIONS FOR STOWED JIB		

7300090-003 NR

ALLOWABLE LINE PULL							WARNING
1 PART LINE	2 PART LINE	3 PART LINE	4 PART LINE	5 PART LINE	6 PART LINE	7 PART LINE	
							<p>ANTI-TWO-BLOCK SYSTEM MUST BE IN GOOD OPERATING CONDITION BEFORE OPERATING CRANE. REFER TO OWNER'S MANUAL.</p> <p>KEEP AT LEAST 3 WRAPS OF LOAD LINE ON DRUM AT ALL TIMES.</p>
9080 LBS	18160 LBS	27240 LBS	36320 LBS	45400 LBS	54480 LBS	60000 LBS	5/8" ROT RESISTANT (5.0:1 S.F.) 45400 LBS. MIN BREAKING STRENGTH
9500 LBS	19000 LBS	28500 LBS	38000 LBS	47500 LBS	57000 LBS	60000 LBS	5/8" - 6 X 25 IWRC (3.5:1 S.F.) 35000 LBS. MIN BREAKING STRENGTH

AREA OF OPERATION



DEDUCTIONS FROM RATED LOADS FOR LOAD HANDLING DEVICES SUPPLIED BY MANITOWOC BOOM TRUCKS, INC.

[illegible]

7300090-003 NR

LMI OPERATING CODES

SETTING	CRANE CONFIGURATION	OUTRIGGER CONFIGURATION
#1	— MAIN BOOM — — — — —	FULLY EXTENDED
#2	— FIXED JIB — — — — —	FULLY EXTENDED
#5	— PERSONNEL LIFTING PLATFORM ON MAIN BOOM — — — — —	FULLY EXTENDED
#6	— PERSONNEL LIFTING PLATFORM ON FIXED JIB — — — — —	FULLY EXTENDED
#9	— MAIN BOOM — — — — —	INTERMEDIATE
#10	— FIXED JIB — — — — —	INTERMEDIATE

WARNING

1. THE OPERATOR MUST READ AND UNDERSTAND THE OWNER'S MANUAL BEFORE OPERATING THIS CRANE.
2. POSITIONING OR OPERATION OF CRANE BEYOND AREAS SHOWN ON THIS CHART IS NOT INTENDED OR APPROVED EXCEPT WHERE SPECIFIED IN OWNER'S MANUAL.
3. LOADED BOOM ANGLES AT SPECIFIED BOOM LENGTHS GIVE ONLY AN APPROXIMATION OF THE OPERATING RADIUS. THE BOOM ANGLE BEFORE LOADING SHOULD BE GREATER TO ACCOUNT FOR DEFLECTIONS. DO NOT EXCEED THE OPERATING RADIUS FOR RATED LOADS.
4. THE OPERATING RADIUS SHOWN IN THE JIB RATING CHART IS FOR FULLY EXTENDED BOOM ONLY. WHEN BOOM IS NOT FULLY EXTENDED, USE ONLY LOADED BOOM ANGLE TO DETERMINE LOAD RATING OF JIB.
5. FOR BOOM ANGLES NOT SHOWN ON JIB LOAD RATING CHART, USE RATING OF NEXT LOWER BOOM ANGLE.
6. FOR BOOM LENGTHS NOT SHOWN, USE RATING OF NEXT SHORTER OR LONGER BOOM LENGTH, WHICHEVER IS LESS. FOR RADII NOT SHOWN, USE RATING OF NEXT LONGER RADIUS.
7. CRANE LOAD RATINGS ON OUTRIGGERS ARE BASED ON FREELY SUSPENDED LOADS WITH THE MACHINE LEVELED AND STANDING ON A FIRM UNIFORM SUPPORTING SURFACE. NO ATTEMPT SHALL BE MADE TO MOVE A LOAD HORIZONTALLY ON THE GROUND IN ANY DIRECTION.

7300090-003 NR



WARNING (CONTINUED)

8. PRACTICAL WORKING LOADS DEPEND ON SUPPORTING SURFACE, WIND, AND OTHER FACTORS AFFECTING STABILITY SUCH AS HAZARDOUS SURROUNDINGS, EXPERIENCE OF PERSONNEL, AND PROPER HANDLING, ALL OF WHICH MUST BE TAKEN INTO ACCOUNT BY THE OPERATOR.
9. THE MAXIMUM LOAD WHICH MAY BE TELESKOPED IS LIMITED BY HYDRAULIC PRESSURE, BOOM ANGLE, AND BOOM LUBRICATION. IT IS SAFE TO ATTEMPT TO TELESKOPE ANY LOAD WITHIN THE LIMITS OF THE LOAD RATING CHART.
10. LIFTING OFF THE MAIN BOOM POINT WHILE THE SWING AROUND JIB IS ERECTED IS NOT INTENDED OR APPROVED.

INFORMATION

1. DEDUCTIONS MUST BE MADE FROM RATED LOADS FOR STOWED JIB, OPTIONAL ATTACHMENTS, HOOKS, AND LOADBLOCKS (SEE DEDUCTION CHART). WEIGHTS OF SLINGS AND ALL OTHER LOAD HANDLING DEVICES SHALL BE CONSIDERED A PART OF THE LOAD.
2. LOAD RATINGS ABOVE THE HEAVY LINE ARE STRUCTURALLY LIMITED CAPACITIES. LOAD RATINGS BELOW THE HEAVY LINE ARE STABILITY LIMITED CAPACITIES AND DO NOT EXCEED 85% OF TIPPING.

DEFINITIONS

1. OPERATING RADIUS IS THE HORIZONTAL DISTANCE FROM THE AXIS OF ROTATION TO THE CENTER OF THE VERTICAL HOIST LINE OR TACKLE WITH LOAD APPLIED.
2. LOADED BOOM ANGLE AS SHOWN IN THE COLUMN HEADED BY \angle , IS THE INCLUDED ANGLE BETWEEN THE HORIZONTAL AND LONGITUDINAL AXES OF THE BOOM BASE AFTER LIFTING RATED LOAD AT RATED RADIUS.

7300090-003 NR